

FactoryTalk View Studio - View Machine Edition - [Tags - /testApp/]

File Edit View Application Tools Window Help

Explorer - testApp

- Local (V144U-PC)
  - testApp
    - testApp
      - System
        - Project Settings
        - Runtime Security
        - Diagnostics List Setup
        - Global Connections
        - Startup
        - HMI Tags
          - Tags
          - Graphics
            - Displays
              - [ALARM]
              - [DIAGNOSTICS]
              - [INFORMATION]
              - MAIN
            - Global Objects
            - Symbol Factory
            - Libraries
            - Images
            - Parameters
            - Local Messages
            - Alarms
              - Alarm Setup
            - Information
              - Information Setup
              - Information Messages
            - Logic and Control
            - Macros
            - Data Log
              - Data Log Models
              - RecipePlus
                - RecipePlus Setup
                - RecipePlus Editor
            - RSLinux Enterprise
              - Communication Setup
            - System

Tag

Name: pot1Value

Type: Analog

Description:

Minimum: 0 Scale: 1

Maximum: 40000 Offset: 0 Data Type: Integer

Data Source

Type:  Device  Memory

Address: ::[Test]Local:1:1.Data.0

Close Accept Discard New Help

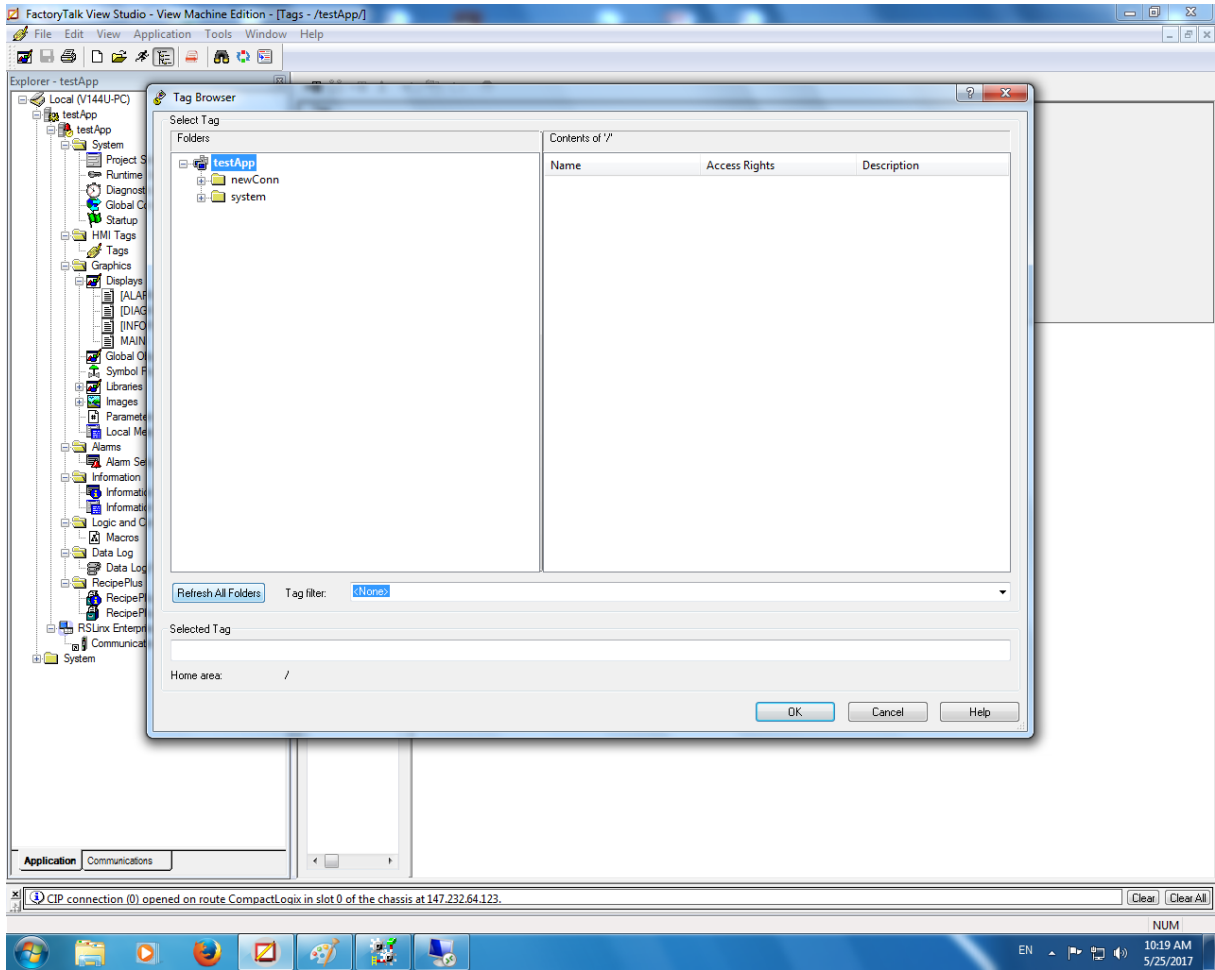
Search For:

Tag Name	Type	Description
1		

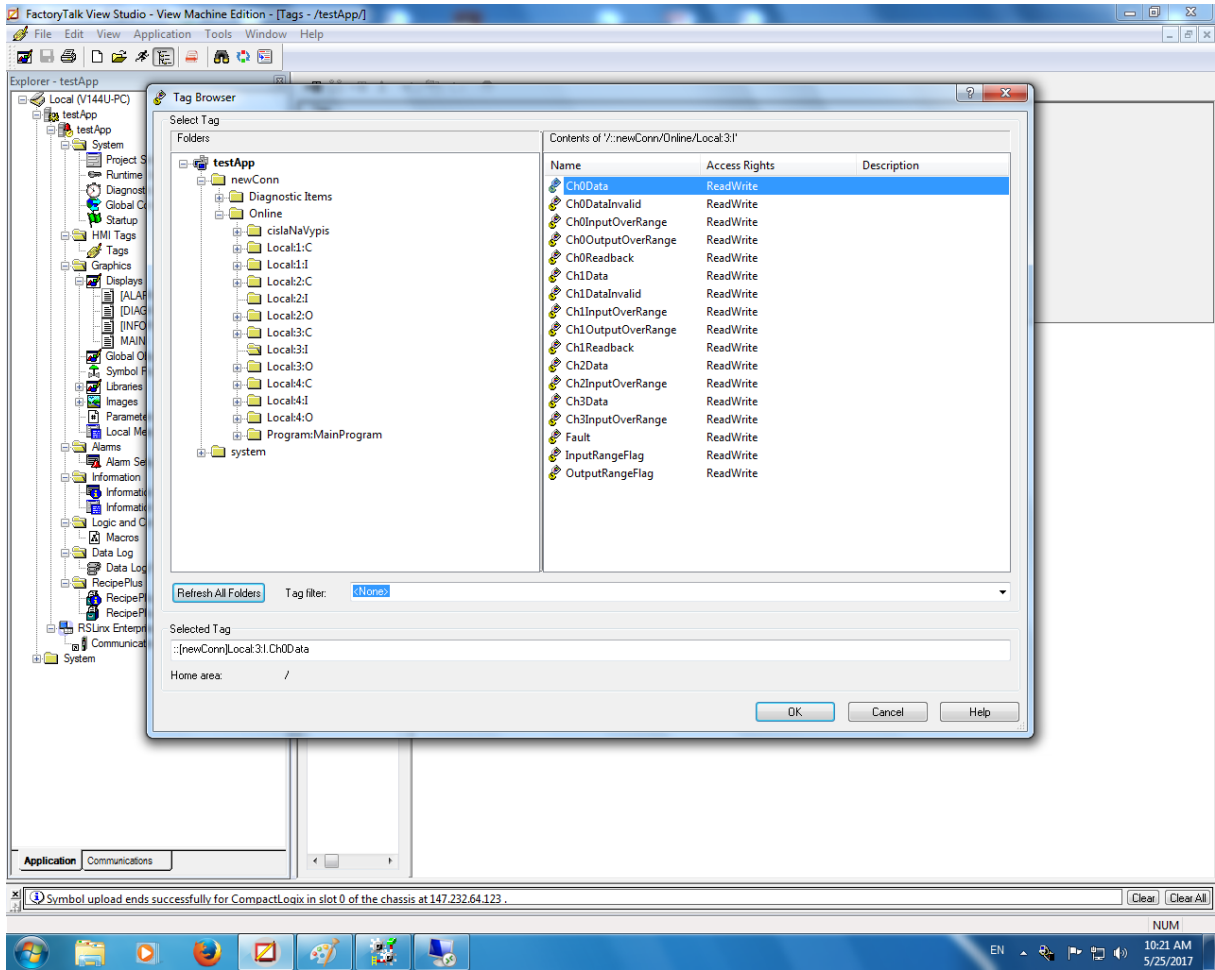
Application Communications

CIP connection (0) opened on route CompactLogix in slot 0 of the chassis at 147.232.64.123. Clear Clear All

NUM 10:19 AM 5/25/2017







Symbol upload ends successfully for CompactLoaix in slot 0 of the chassis at 147.232.64.123. [Clear] [Clear All]

